

APHIDS: Facts and Notes | Control | Prevention

Facts and Notes

Aphids can be a problem in the home landscape, vegetable garden, or fruit garden. They can vector many viral diseases and can cause significant damage to desired plants if the aphid population is left unchecked. Aphids reproduce quickly and have multiple generations per year. Females of most species can give birth to live young, meaning that within a few days in summer time temperatures aphid populations can grow exponentially.

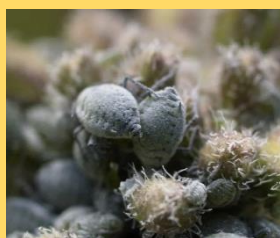
Types of Aphids Commonly Found in KAUST



Apple aphid



Oleander aphid



Cabbage aphid



Plum mealy aphid

Pest Control procedures in managing pests

1. Identify the pest. Aphids come in various species, and their treatment methods vary by species.
2. Implement control following the applicable IPM principles, starting with:
 - **Cultural Control** - Simple steps prevent serious aphid infestations. Aphids like succulent, nourishing new growth, which nitrogen boosts. Aphids may worsen with over fertilization. Less fertilizer reduces aphids.
 - **Mechanical Control** - Rinsing plant leaves removes aphids. A water hose with adequate pressure can remove aphids without harming the plant.
 - **Biological Control** - Any product containing *Beauveria bassiana* is best alternative treatment. If available, use this product first to solve the problem. This entomopathogenic fungus is usually applied as a foliar spray and is parasitic to many soft body insects.
 - **Chemical Control** - If other methods fail, apply insecticides as a spot treatment with a highly diluted mixture to the affected area in accordance with the instructions provided by the manufacturer. Use approved pesticide namely Sumithion 50 EC - Fenitrothion 50% w/v (WHO class: III, Local Reg.: 118-50-889), or Cythrin 10 EC - Cypermethrin 10% (WHO class: II, Local Reg.: 72000-1065).
3. Monitor the plants condition after the treatment. Keep record for future evaluation.

What you can do to prevent Aphids in your garden

- Avoid over-fertilizing. Fertilize following advise from horticulturist.
- Remove the aphid-forming leaves, stem, or short branch.
- Remove aphids off plant leaves using a water hose with adequate pressure.
- Cooperate with the service provider during treatment activities by keeping yourself and your pets in a safe place.