

## MEALYBUGS: Facts and Notes | Control | Prevention

### Facts and Notes

Mealybugs tend to be drawn to certain plants that are abundant with juices they prefer to feed on. Citrus trees are particularly susceptible, and mealybugs can pose a serious threat to some commercial crops, such as mango. Mealybugs can infest a number of indoor houseplants, particularly tropical species.

Mealybugs are attracted to plants with high nitrogen levels and soft growth; they may appear if you overwater and over-fertilize your plants.

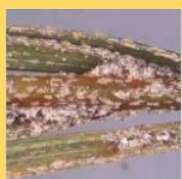
### Types of Mealybugs Commonly Found in KAUST



Cottony mealybug



Corrugated mealybug



Red palm scale



California red loose

### Pest Control procedures in managing pests

1. Check for Mealybugs and protect the garden. Identifying and eliminating mealybugs are simple. Here are mealybug control methods for protecting plants.
2. Implement control following the applicable IPM principles, starting with:
  - **Cultural Control-** Avoid overwatering and excess fertilizing indoor and outdoor plants. Container plants need drainage holes. Too-nutrient-dense and saturated with lots of plant juices are targets. Spray your plants hard to remove mealybugs and other scale insects.
  - **Mechanical Control-** Remove manually by hand or with a brush or a cloth. (if you opt for this, soak them with water and a little soap). It is ideal if the plant is small and the pest is not widespread.
  - **Chemical Control-** If other methods fail, apply approved insecticides in a highly diluted mixture as a spot treatment to the affected area in accordance with the instructions provided by the manufacturer. Use Sumithion 50 EC - Fenitrothion 50% w/v (WHO Class: III, Local Reg.: 118-50-889), or Cythrin 10 EC - Cypermethrin 10% (WHO Class: II, Local Reg.: 72000-1065).
3. Monitor the plants condition after the treatment. Keep record for future references.

### What you can do Mealybugs prevention at home

- For small infestations use isopropyl alcohol, you can soak a cotton ball in 70% rubbing alcohol and wipe the mealybugs away. This kills and removes them. Test it on one leaf before wiping the whole plant to make sure the leaves don't burn.
- Cooperate with the service provider during treatment activities by keeping yourself and your pets in a safe place.